



ARIENNIR GAN Y  
LOTERI GENEDLAETHOL  
NATIONAL  
LOTTERY FUNDED



# Cronfa Loteri Fawr Big Lottery Fund

Nia Jones, Funding Officer

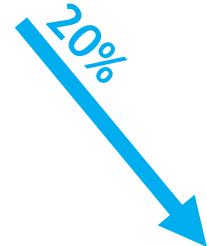
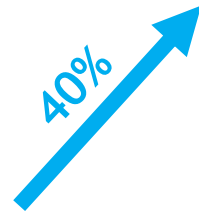
@LoteriFawrCymru  
[www.cronfaloterifawr.org.uk](http://www.cronfaloterifawr.org.uk)

@BigLotteryWales  
[www.biglotteryfund.org.uk](http://www.biglotteryfund.org.uk)

# Y Loteri Genedlaethol The National Lottery



**Achosion Da**  
**Good Causes**



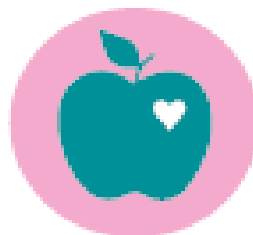
# Beth rydym wedi ariannu yng Nghymru?

## What have we funded in Wales?

Dros y ddwy flynedd ddiwethaf/ Last two years.



Yr Amgylchedd  
£16m i 99 o brosiectau  
The environment  
£16m to 99 projects.



Iechyd a lles  
£24m i 202 o brosiectau  
Health and Wellbeing  
£24m to 202 projects.



Gwasanaethau a  
chymunedol  
£40m i 759 o brosiectau  
Community services and  
facilities  
£40m to 759 projects



Cyflogaeth a menter  
£12m i 71 o brosiectau  
Employment and enterprise  
£12m to 71 projects



Dysgu  
£22m i 130 o brosiectau  
Learning  
£22m to 130 projects.



Plant a phobl ifanc  
£19m i 314 o brosiectau  
Children and young people  
£19m to 314 projects.

# Am beth rydym ni'n chwilio?

## What are we looking for?

Cymraeg - <https://youtu.be/Syb42DnQt6o>

English - <https://youtu.be/P-kS2PkmJ48>



**ARIENNIR GAN Y  
LOTERI GENEDLAETHOL  
NATIONAL  
LOTTERY FUNDED**



**Ydych chi eisiau gweithio gyda phobl leol i  
helpu gwella'u bywydau a chymunedau?**

# Ein grantiau Our grants



Arian i Bawb y Loteri Genedlaethol  
National Lottery Awards for All

£300 - £10,000

Pawb a'i Le: Grantiau maint canolig  
People and Places: Medium grants

£10,001 - £100,000

Pawb a'i Le: Grantiau mawr  
People and Places: Large grants

£100,001 - £500,000



# Arian i Bawb y Loteri Genedlaethol National Lottery Awards for All

£

£300 - £10,000



Prosiectau cymunedol  
Community projects



Penderfyniad o fewn 10 wythnos  
Decision in 10 weeks



Prosiectau hyd at 12 mis  
Projects lasting up to 12 months

# Am beth rydym ni'n chwilio?

## What are we looking for?

- Gwella'r lleoliadau sy'n bwysig i gymunedau
- Dod â phobl ynghyd ac adeiladu cysylltiadau cryf o fewn ac ar draws cymunedau
- Galluogi mwy o bobl i gyflawni eu potensial trwy weithio i ddelio â phroblemau yn y cam cynharaf posib
- Shape the places and spaces that matter to communities
- Bring people together and build strong relationships in and across communities
- Enable more people to fulfil their potential by working to address issues at the earliest possible stage

# Pwy all ymgeisio? Who can apply?



ARIENNIR GAN Y  
LOTERI GENEDLAETHOL  
NATIONAL  
LOTTERY FUNDED



Nid er elw  
**Not for profit**



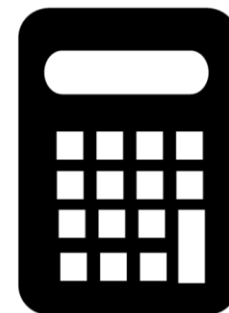
2 aelod nad oes  
 unrhyw gyswllt  
 rhyngddynt  
**2 unrelated  
 members**



Cyfansoddiad  
**A constitution**



Cyfrif banc  
 Deyrnas  
 Unedig  
**A UK bank  
 account**



Cyfrifon  
**Accounts**



# Pawb a'i Le

## People and Places

- £10,0001 - £500,000
- Prosiectau hyd at 5 blwyddyn  
Projects lasting up to 5 years
- Nod y rhaglen yw: “Gan weithio ar y cyd, bydd pobl a chymunedau’n defnyddio eu cryfderau i gael effaith gadarnhaol ar y pethau sydd fwyaf pwysig iddynt.”

The aim of the programme is: “Working together, people and communities will use their strengths to make positive impacts on the things that matter to them the most.”





**Galluogi pobl i arwain -**  
Rydym eisiau i'r bobl a fydd  
yn elwa o'ch prosiect neu  
sy'n cael eu heffeithio  
ganddo, gymryd rhan yn  
ystyrlon yn natblygiad,  
dyluniad a chyflwyniad eich  
gweithgareddau.

**People led -** We want the  
people who will benefit  
from, or be affected by your  
project to be meaningfully  
involved in the  
development, design and  
delivery of your activity.



**Cysylltiedig** - rydym eisiau gwybod bod gennych ddealltwriaeth dda o'r hyn y mae eraill yn ei wneud yn lleol, bod yr hyn yr ydych yn ei wneud yn cydweddu â hyn ac yn ychwanegu ato a bod gennych berthnasoedd gwaith gyda grwpiau perthnasol eraill.

**Connected** - we want to know that you have a good understanding of what others are doing locally, that what you're doing complements and adds to this, and that you have working relationships with other relevant groups.



**Seiliedig ar gryfderau -**  
rydym eisiau annog  
mudiadau i fanteisio i'r  
eithaf ar sgiliau a  
phrofiadau pobl a  
chryfderau o fewn  
cymunedau, ac adeiladu  
arnynt.

**Strengths-based** - we  
want to encourage  
organisations to make  
the most of, and build  
on, the skills and  
experiences of people  
and strengths within  
communities

# Grantiau canolig (£10,000 - £100,000)

## Medium grants (£10,000 - £100,000)



ARIENNIR GAN Y  
LOTERI GENEDLAETHOL  
NATIONAL  
LOTTERY FUNDED

Ffoniwch ni neu yrrwch e-bost i drafod eich prosiect gydag ymgynghorydd lleol

Call or email us to discuss your project with a local advisor

Os ydych yn gymwys, fe gewch hyd at 4 mis i gwblhau cais

If eligible, up to 4 months to complete an application

Byddwn yn asesu'ch cais o fewn 3 mis

We will assess your application within 3 months

# Grantiau mawr (£100,001 - £500,000)

## Large grants (£100,001 - £500,000)



ARIENNIR GAN Y  
LOTERI GENEDLAETHOL  
NATIONAL  
LOTTERY FUNDED

Cam 1  
Stage 1

- 6 wythnos
- 6 weeks

Cam 2  
Stage 2

- 4 mis i ddatblygu'ch cais.
- 4 months to develop your application
- Penderfyniad o fewn 4 mis
- Decision made within 4 months

Mwy o wybodaeth...  
*For more information...*



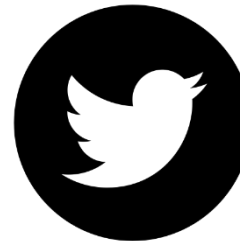
[cronfaloterifawr.org.uk](http://cronfaloterifawr.org.uk)  
[biglotteryfund.org.uk](http://biglotteryfund.org.uk)



0300 123 0735



Big Lottery Fund Wales



@LoteriFawrCymru  
[@BigLotteryWales](https://twitter.com/BigLotteryWales)



[cymru@cronfaloterifawr.org.uk](mailto:cymru@cronfaloterifawr.org.uk)  
[wales@biglotteryfund.org.uk](mailto:wales@biglotteryfund.org.uk)